

Open English

Oasis: All-In-One Open English Learning Platform
Take learning to the next level with AI



Personalized for Students Customized for Teachers
Empowering Primary and Secondary Learning



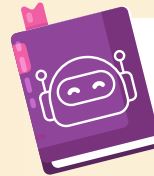
Register for
free trial!

• EXPERIENCE THE UNIQUE FEATURES •



Unified Learning Platform

One-stop access to core textbook content and supplementary resources



AI Chatbot

AI-generated feedback tools support real-time interaction for interactive learning



Theme-based Materials

Contextualized content mapped to EDB curriculum for students of all levels



Multimedia Components

Motivate learning with a mix of multimedia components (e.g. audio, animations, graphics)



Gamification

Gamification features boost student engagement



Customizable Content

- Teachers freely upload and modify AI-generated materials
- Scale up and down the level of difficulty of text



Read Aloud

AI instant feedback on pronunciation correction



Performance Analysis

Performance summary track learning progress



Primary Level

Pre-reading

Reading

Vocabulary

Language Structure

Writing

Common Components for Both Primary and Secondary Levels

- Text Types
- Grammar
- Vocabulary and Dictation
- Phonics
- AI-generated Writing



Secondary Level

Pre-reading

Reading

Reading and Listening

Vocabulary

Writing

Listening and Integrated Skills

Official Launch: September 2026

Open English platform is now available for subscription exclusively through Hong Kong Education City eLAFP webpage. Choose the plan that best fits your school's needs and gain access to our full set of AI powered tools. Explore our flexible options and key features below.

3-Year

Sponsorship for Schools from QEF

Only eligible local publicly-funded schools may apply for the QEF grant. Publicly-funded schools including government schools, aided schools (including special schools), caput schools, and Direct Subsidy Scheme schools.

Subscription Plans & Feature Details



Subscription Mode (Primary + Secondary Inclusive)	Whole School (Max. 30 classes)	Two Selected Grade Levels (Max. 8 classes)	
	Plan A (Full Access)	Plan B (Full Access)	Plan C (Limited Access)
Annual Plan	HK \$49,000	HK \$22,000	HK \$13,000
(Optional) Each Additional Class	HK \$5,000	HK \$5,000	HK \$3,000
Semi-annual Plan	HK \$30,000	HK \$14,000	HK \$8,000
(Optional) Each Additional Class	HK \$3,000	HK \$3,000	HK \$1,800
Basic Contents and Functions			
Study units with contextualized and theme-based contents	✓	✓	✓
Multimedia learning resources	✓	✓	✓
Instant auto-grading for questions with standard answers	✓	✓	✓
AI Marking with feedback for open-end questions and writing compositions	✓	✓	✓
AI chatbot for conversational practice and writing support	✓	✓	✓
Writing tasks exported as PDF format for record and review	✓	✓	✓
Revision unit games	✓	✓	✓
Grammar concepts and practice with AI hints and feedback	✓	✓	✓
A structured collection of text types	✓	✓	✓
Phonics resources with AI instant feedback on pronunciation correction	✓	✓	✓
Comprehensive performance tracking summaries and analysis	✓	✓	✓
Customized avatars and reward	✓	✓	✓
Text-to-speech function support	✓	✓	✓
Writing tasks supports image-to-text conversion and speech-to-text	✓	✓	✓
English-Chinese translation for bilingual support	✓	✓	✓
Advanced Features			
AI writing task generator (including editing function and tailored marking rubrics)	✓	✓	✗
AI grammar exercises generator	✓	✓	✗
AI text type, reading and listening task generator (editing and custom text upload function supported)	✓	✓	✗
Customizable vocabulary dictation function	✓	✓	✗
Personal vocabulary list for students	✓	✓	✗

Enquiries:

Tel: 27686470

E-mail: openenglish@hkmu.edu.hk

www.hkmu-oasis.org

