

Latest Updates for 2026/27

What's New?

1 **CUSTOM PRACTICE BUILDER**

Targeted reading exercises customised by precise skills and difficulty levels in just a few clicks.

2 **AI Question Generator**
[Taster Feature]

Upload your school-based materials to instantly generate tailored practice questions by difficulty and skill type.

LATTE

Learning Assessment Teaching Technology for Excellence

Quality Education Fund e-Learning Ancillary Facilities Programme (eLAFP)

Reach Out to Discover More

Interested in other AI-supported solutions for **writing, listening, and speaking**? Thinking about customising school-based solutions? Arrange a personalised demonstration to see our solutions in action.



Contact Us

- Hong Kong Office: (+852) 3188 2600
Shenzhen Office: (+86) 0755 8366 4290
- (+852) 9299 7851
- latte@wiseman.com.hk



Enrol NOW

Your AI-Powered Learning and Teaching Partner for the HKDSE



Proudly Presented by:

Funded by:

Powered by:

Official HKDSE past papers from the HKEAA, available for use by schools with a valid full licence.



LEARNING

HKDSE Past Paper and Mock Practice Repository for All Levels (100+ sets)

Correct Answers: 73 / 84 Score: 86.9%

Predicted Score: **5***

1 more correct answer to level up

Instant Grade Projection
Benchmarking against the HKDSE Standard

Questions

Students	1	2	3	4	5	6	7	8	9	10	11	12	13	14	15	16	17	18	19	20	21	22	23	24	25	26	27	28	29	30
1	1	2	3	4	5	6	7	8	9	10	11	12	13	14	15	16	17	18	19	20	21	22	23	24	25	26	27	28	29	30
2	1	2	3	4	5	6	7	8	9	10	11	12	13	14	15	16	17	18	19	20	21	22	23	24	25	26	27	28	29	30
3	1	2	3	4	5	6	7	8	9	10	11	12	13	14	15	16	17	18	19	20	21	22	23	24	25	26	27	28	29	30
4	1	2	3	4	5	6	7	8	9	10	11	12	13	14	15	16	17	18	19	20	21	22	23	24	25	26	27	28	29	30
8	1	2	3	4	5	6	7	8	9	10	11	12	13	14	15	16	17	18	19	20	21	22	23	24	25	26	27	28	29	30
14	1	2	3	4	5	6	7	8	9	10	11	12	13	14	15	16	17	18	19	20	21	22	23	24	25	26	27	28	29	30
16	1	2	3	4	5	6	7	8	9	10	11	12	13	14	15	16	17	18	19	20	21	22	23	24	25	26	27	28	29	30
18	1	2	3	4	5	6	7	8	9	10	11	12	13	14	15	16	17	18	19	20	21	22	23	24	25	26	27	28	29	30
15	1	2	3	4	5	6	7	8	9	10	11	12	13	14	15	16	17	18	19	20	21	22	23	24	25	26	27	28	29	30
20	1	2	3	4	5	6	7	8	9	10	11	12	13	14	15	16	17	18	19	20	21	22	23	24	25	26	27	28	29	30
21	1	2	3	4	5	6	7	8	9	10	11	12	13	14	15	16	17	18	19	20	21	22	23	24	25	26	27	28	29	30
26	1	2	3	4	5	6	7	8	9	10	11	12	13	14	15	16	17	18	19	20	21	22	23	24	25	26	27	28	29	30
28	1	2	3	4	5	6	7	8	9	10	11	12	13	14	15	16	17	18	19	20	21	22	23	24	25	26	27	28	29	30
25	1	2	3	4	5	6	7	8	9	10	11	12	13	14	15	16	17	18	19	20	21	22	23	24	25	26	27	28	29	30
30	1	2	3	4	5	6	7	8	9	10	11	12	13	14	15	16	17	18	19	20	21	22	23	24	25	26	27	28	29	30

■ Correct Attempt
■ Wrong Attempt

Real-time Display of Students' Answers

ASSESSMENT

Instant Grade Projection and Personalised Learning Path to Level Up

Error Rate: 46%

Explanation: This is a thematic question.

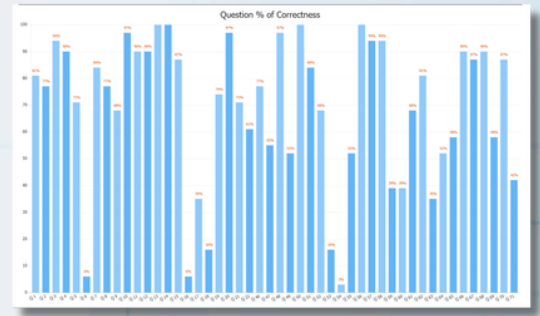
(i) in paragraph 16, Harford encourages readers to rethink their attitude towards mess, and to experiment improvisation, ambiguity, disruption and challenge. He suggests that readers will be surprised by these unplanned and seemingly unorganised experiences as they will improve things. Here, Harford is positive towards being messy.

This is an easier question. Work on this to level up.

Personalised Learning Path to Level Up

TEACHING

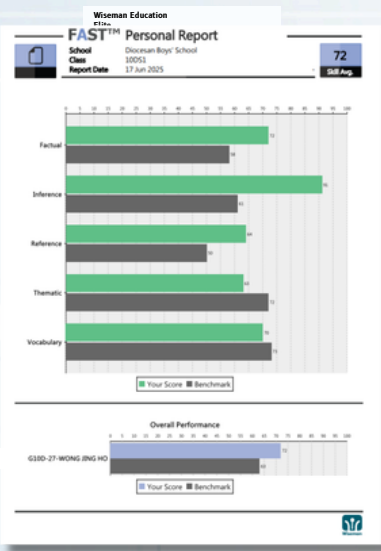
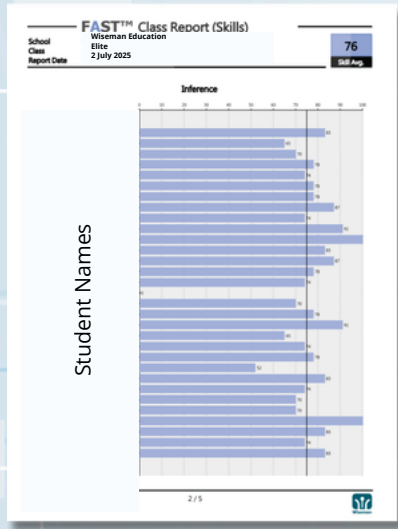
Instant Performance Analysis and Real-time Display of Students' Answers



Instant Performance Analysis

TECHNOLOGY

Real-time Class and Individual Skill Report



Students' Skill Report on Specific Reading Skills such as Factual, Reference, Vocabulary, Inference, Thematic, and more...

EXCELLENCE

Detailed Answer Explanations and Skill-focused Practices for Further Consolidation

64. Why does the writer describe the harvesting of honey from beehives as a 'drama'?

✗ It's exciting and full of surprises → the harvest is unpredictable / not the same every year / uncertain / has ups and downs

Error Rate: 58%

Explanation: This is a factual question. A drama refers to a situation that is unexpected and with excitement. The writer describes the harvesting of honey from beehives as a drama because according to paragraph 4, harvest does not happen every year, or even often. Some years he gets nothing but this year he gets a lot. This is unpredictable and there are uncertainties, which show the characteristics of a drama.

Detailed answer explanations prepared by experienced secondary school teachers and HKDSE markers

Note: Past papers and marking schemes from the HKDSE are reproduced by permission of the Hong Kong Examinations and Assessment Authority (HKEAA). All rights reserved.



Demo Video

